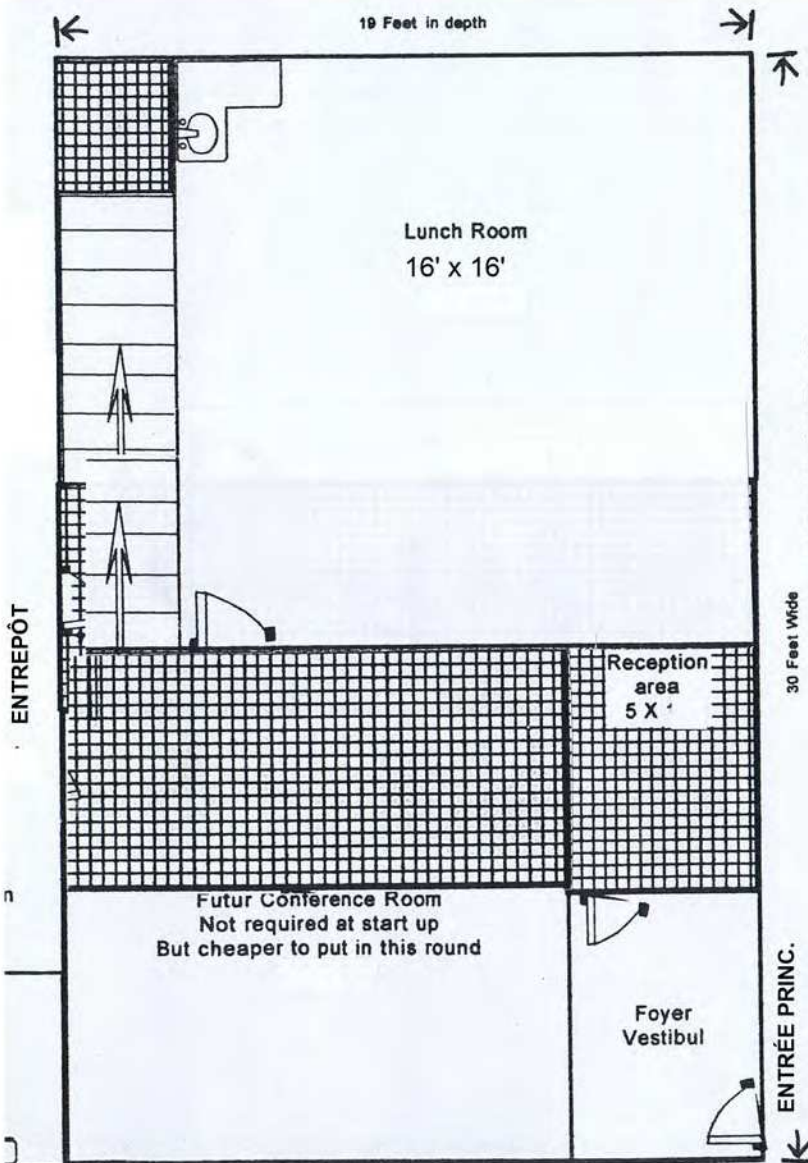


PLAN DES FONDATIONS
 17 510, RUE CHARLES, MIRABEL

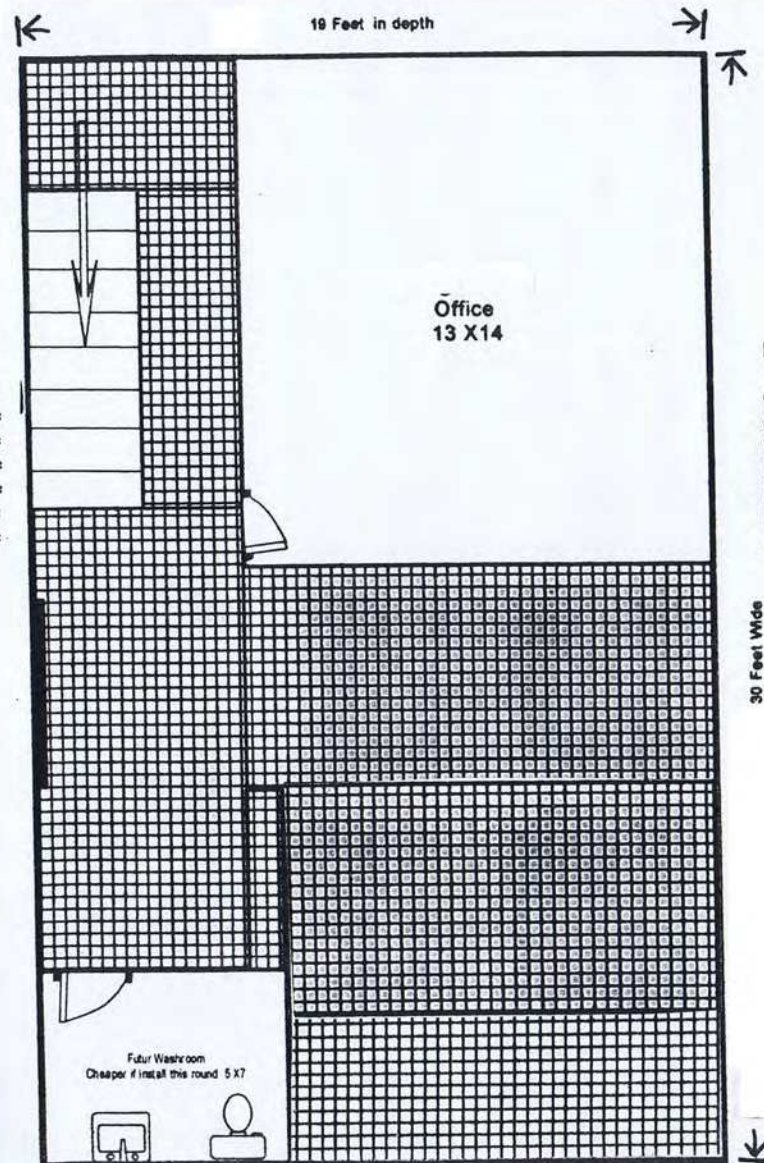


REZ-DE-CHAUSSÉE / BUREAUX

**Proposed
First Floor**

Items to BID

- Office walls Gyprock =
- Shop Divider wall =
- Washroom =
- Floor tiles =
- Lighting =
- Elcetrical wall plugs =
- Suspedced Ceilling =



**Proposed
Second Floor**

Items to BID

- Office walls Gyprock
- Shop Divider wall
- Washroom
- Floor tiles
- Lighting
- Elcetrical wall plugs
- Suspedced Ceilling

MEZZANINE / BUREAUX

PLAN DU R.-D.-C. ET DE LA MEZZANINE
 17 510, rue Charles, suite 200, Mirabel, Qc